

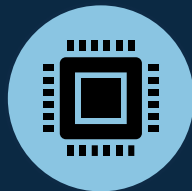
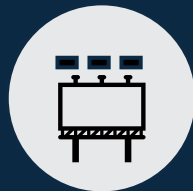
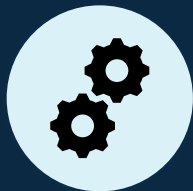
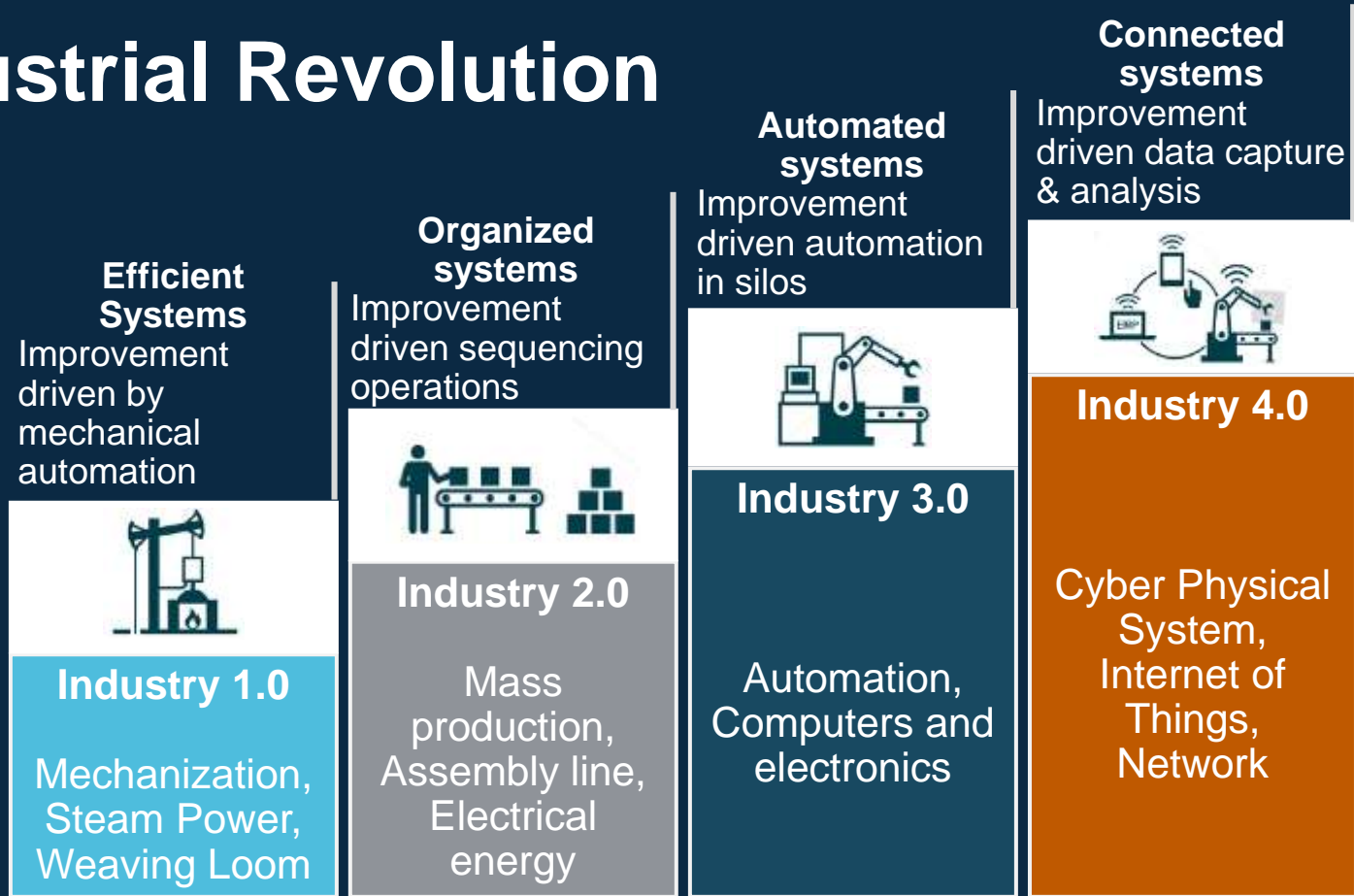
**aruba**

a Hewlett Packard  
Enterprise company

**TECH TALK**

**Aruba solutions for Manufacturing Vertical**


# Industrial Revolution



- Increased **safety**
- Increased **cybersecurity**
- Optimized **maintenance**
- Reduction in **downtime**
- Optimize **resource utilization**
- Smarter **decisions**

**Intelligence at the Edge**





**Industry 4.0 “refers to the fourth industrial revolution, which connects machines, people, and physical assets into an integrated digital ecosystem that seamlessly generates, analyzes and communicates data, and sometimes takes action based on that data without the need for human intervention.”**

PwC's Insights



# Smart Manufacturing

## Smart Manufacturing Characteristics

- ❑ Digitization of every part of a manufacturing enterprise with interoperability and enhanced productivity
- ❑ Connected devices and distributed intelligence for real-time control and flexible production of small batch products
- ❑ Collaborative supply chain management with fast responsiveness to market changes and supplying chain disruption
- ❑ Integrated and optimal decision making for energy and resource efficiency
- ❑ Advanced sensors and big data analytics through product lifecycle to achieve fast innovation cycle

### Connected

- Seamless connectivity for IoT and Applications
- Collaboration between departments

### Optimized

- Predictable production capacity and asset utilization

### Transparent

- Live metrics to support quick and consistent decision making

### Proactive

- Predictive anomaly identification and resolution
- Real-time safety monitoring

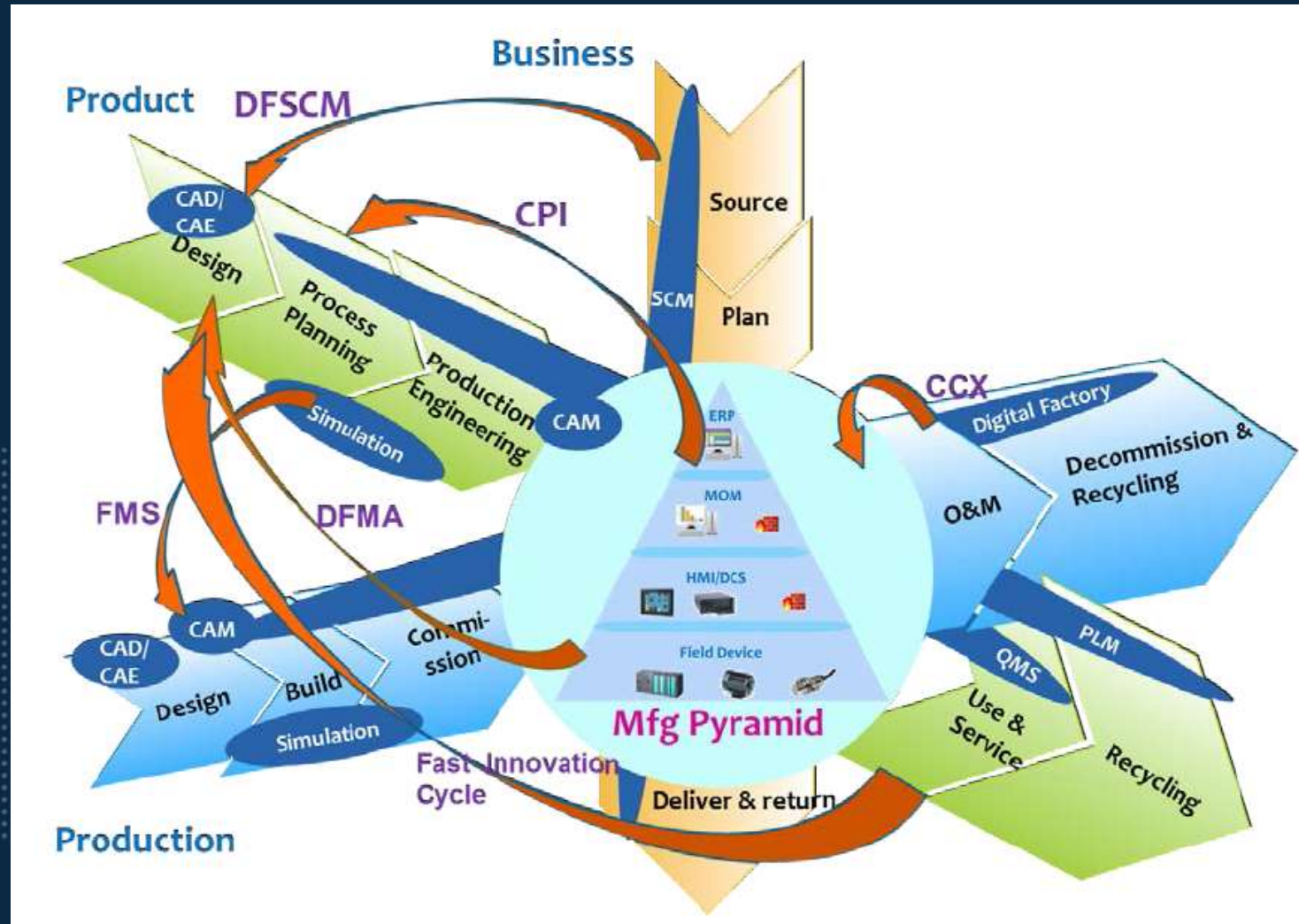
### Agile

- Flexibility to implement product changes



# Smart Manufacturing Ecosystem

Orchestration of ...



Source: Current Standards Landscape for Smart Manufacturing Systems, NIST IR 8107

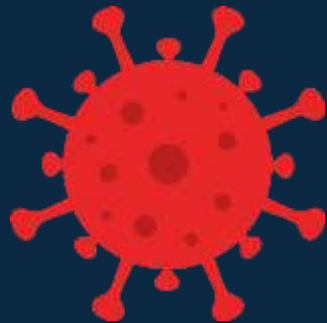


# REIMAGINE MANUFACTURING

## Challenges forcing reinvention

### Covid 19

*Lost Revenue | Employee Loss  
Supply & Demand*



### Employee Experience

*Health and Safety  
Effectiveness | Touchless Experiences*



### Competition

*Local | Overseas  
Improved Operations and Efficiencies*



# Smart Manufacturing

Connecting departments to deliver better business outcomes

## Network Simplification



# Aruba Solutions for Smart Manufacturing





# Connectivity options for Smart Manufacturing

Machine & Vehicle Telemetry

High-Speed Telemetry & Edge Analytics

Switching

Cellular Backhaul

Material Carriers & Mobile Robots

Outdoor

Hazardous Areas

Uncontrolled Indoor



Converters



Native Ethernet



Native Wi-Fi APs With Integrated BLE For Wayfinding & Asset Tracking

Edge Data Collection, and Analytics



# ARUBA Ex Rated ACCESS POINTS



AP-375EX and AP-377 derivatives certified to Class 1 Division 2 (Groups A/B/C/D/T4) and Class 1 Zone 2 (Groups IIC/T4)

# ACCESS POINT

# AS A PLATFORM

## 802.11ax Wi-Fi Radios

- 802.11ax network access
- Asset tracking tags
- Personnel location badges
- Smart wrist bands with telemetry sensors
- Worker safety smart helmets
- Sensors, actuators, and smart lighting systems
- Bar code scanners and mobile printers

## 802.15.4 ZigBee Radio

- Food safety sensors
- Cooking and refrigeration sensors
- Heating, air quality, presence, security, panic, call, button, lighting, leak sensors
- Load controls and actuators
- Door locking and access systems



## Bluetooth 5 Radio

- Wayfinding and geofencing
- Energy harvesting heating, air quality, presence, security, panic, call, button, lighting, leak sensors
- Load controls and actuators
- Door locking and access systems
- High accuracy industrial and Ex asset and personnel location tags

## USB Port

- Cellular interfaces
- Electronic shelf labels
- Gun shot detectors
- Retrofit ZigBee interface for existing deployments
- Custom interfaces



# ZF deTAGtive

## Industrial location tags



## Bluetooth based location services

- Enable real-time location monitoring across the entire plant without significant investments in new infrastructure
- Update cloud-based applications without impacting workflows
- Share location data and asset status via open APIs to optimize time-and-motion, maintenance, and asset storage process
- Protect factory workflow information with end-to-end security

## How does this work

- Aruba AP forwards location data to ZF deTAGtive server
- When within reach of ZF TagFinder, it can download other cached info / upgrade firmware

# Connected Worker Solution Framework

## PTC Augmented Reality (Vuforia)



**Problem statement:** Ensure 24/7 skill availability on the factory floor

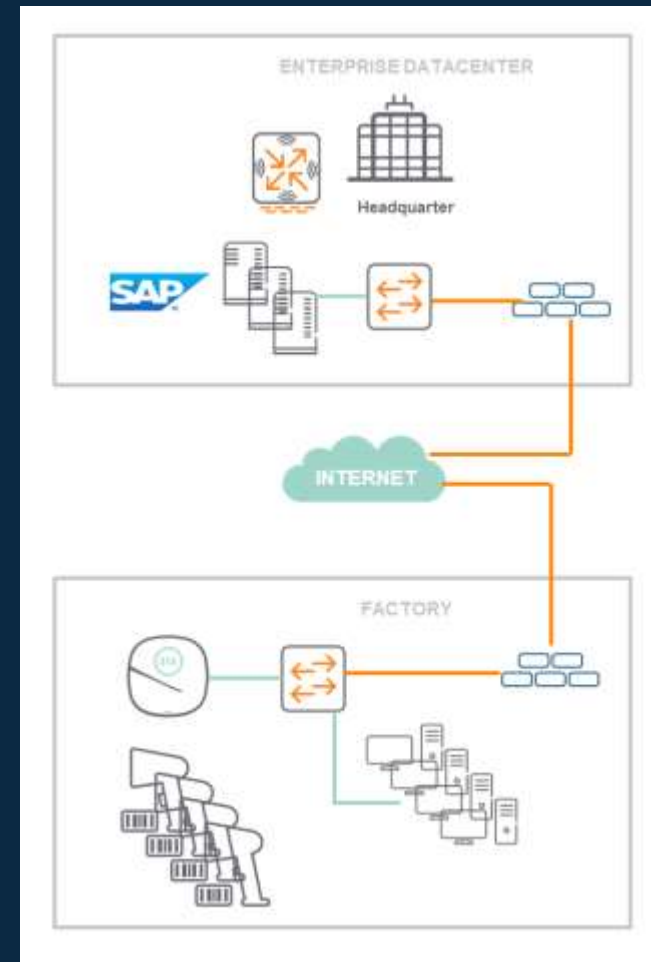
**Solution:** In-plant worker collaborates with remote Subject Matter Expert (SME) either in the Control Room or at a Vendor's or remote office, allowing the in-plant worker to be guided by the SME as to how to adjust equipment to provide desired results.

**Technology:** PTC ThingWorx & Vuforia running on HPE compute equipment and Aruba wireless mobility network, Aruba BLE Beacon to provide location and context accuracy

# Product Quality Consistency

Real-time inventory management – global sites connect to central SAP instance

- **Customer problem:** Deliver consistency in product quality across global manufacturing sites – increase customer footprint
- **Solution:** Centralized SAP ERP infrastructure for all sites, wireless scanners to inward material, check-out material using wireless scanners to assemble final product with correct components, and maintain inventory consistency in ERP database (in real-time)
- **Technologies:** SAP hosted on HPE servers, Aruba Indoor access points covering Factory and outdoor yard locations, 3<sup>rd</sup> party wireless SKU scanners



# CISO Perspective – Insights to manage Risk

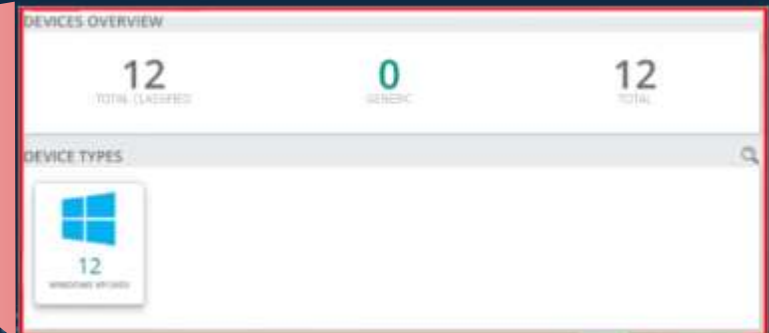
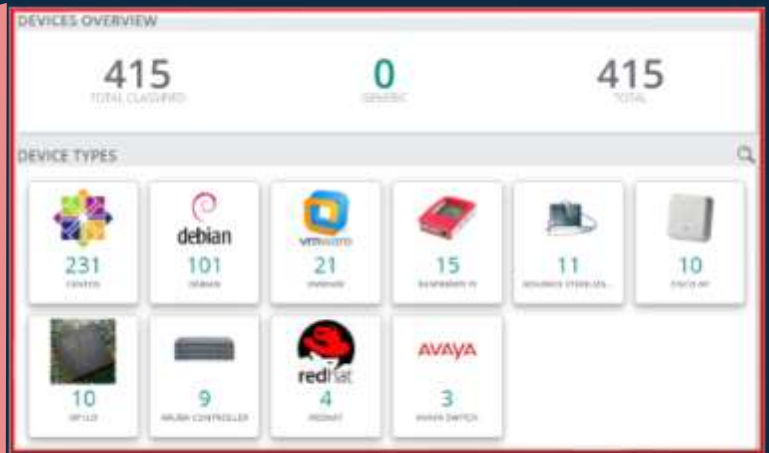
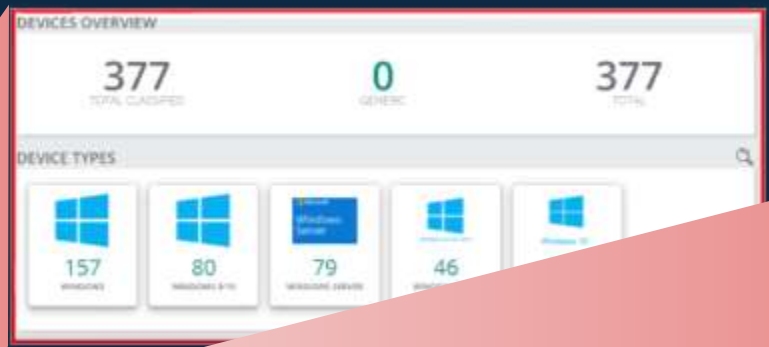
What are my organizations risk exposures?

Aruba ClearPass Device Insight CLASSIFIED DEVICES | DASHBOARD

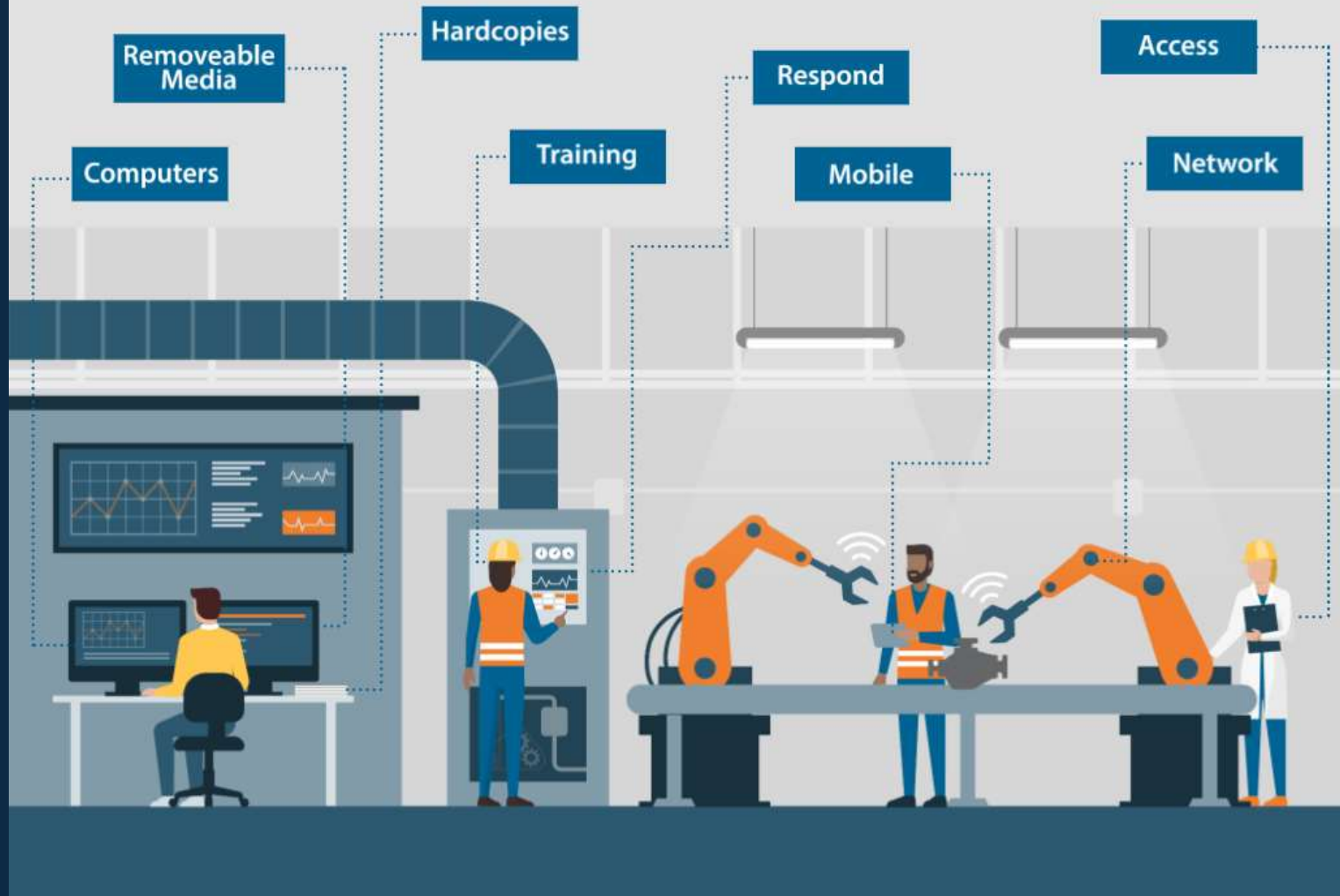
Summary Device Network LAST 1 YEAR Aug 25 2019 - Aug 24 2020 New Devices Active Devices

SEARCH HELP APPS DASHBOARD DEVICES

- ACTIVE FILTER - Quarantine
- No Active Filter
- WHAT WHERE OTHERS
- Category
- Family
- Type
- USER TAGS
- iLO Port Open (10)
  - Telnet Open D... (6)
  - IRC Ports Conn... (15)
  - Open Proxy Po... (318)
  - RDP Devices Wi... (377)**
  - SSH Port Enabl... (415)**
  - Cryptolocker B... (13)
  - Unhealthy (946)
  - Risky Devices (15)
  - Public Area De... (215)
  - Legacy Windows (12)**
  - WinPort\_137 (0)
  - Facebook com... (1.51K)
  - Student Nurse ... (10)



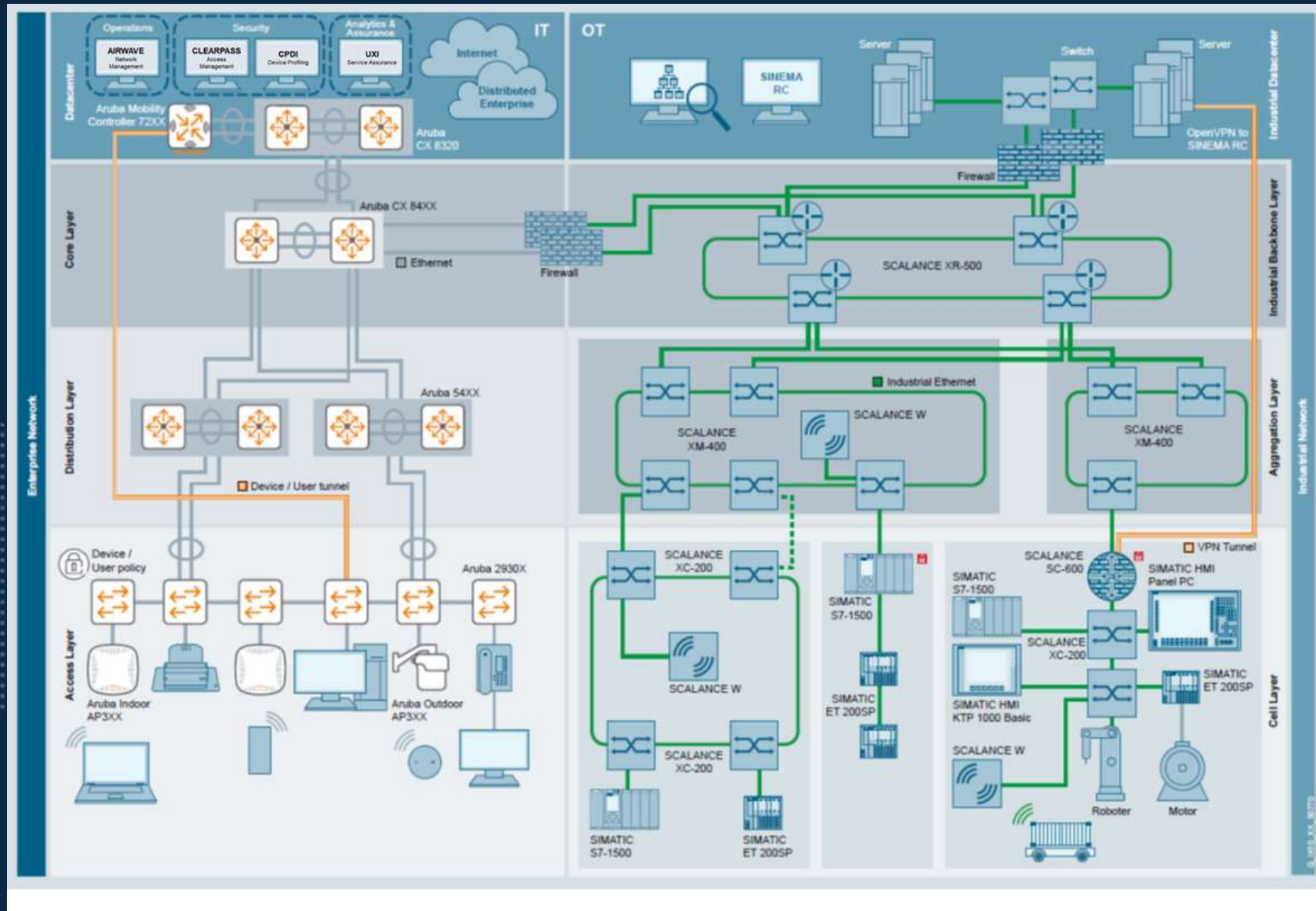
# How Secure is Your Factory Floor?



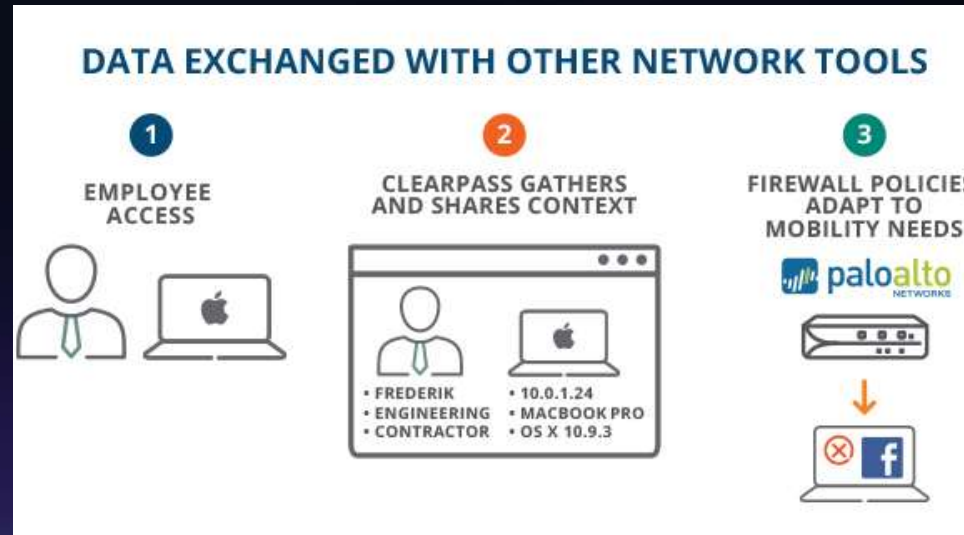
Source: Manufacturing Extension Partnership, NIST



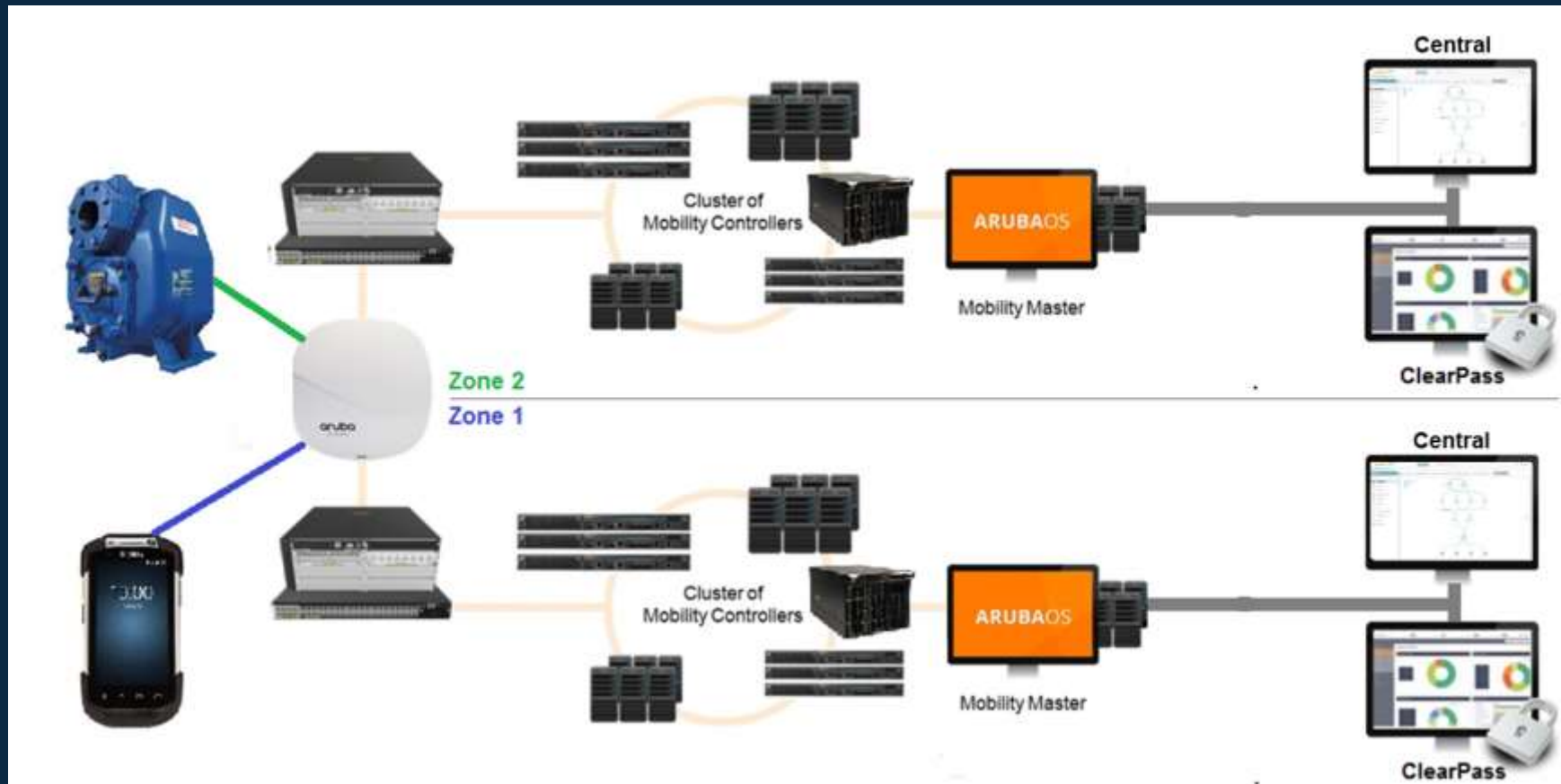
# Aruba – Siemens: Redefining IT-OT Integration



# INTEGRATING IT & OT SECURITY



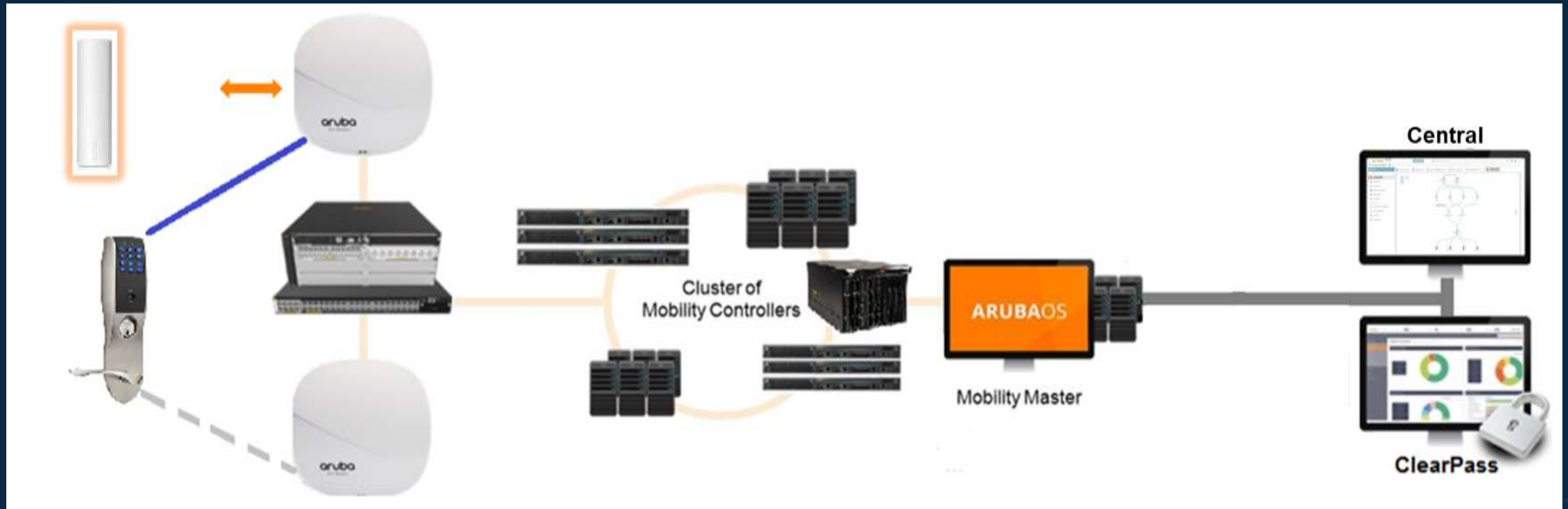
# MULTIZONE: MULTIPLE ENTITIES, EACH WITH DISTINCT SECURITY POLICIES, SHARE ONE INFRASTRUCTURE



A physical AP can serve as **up to 5 virtual APs**, each with its own security and policy settings



# User Experience Insight (UXI) supervises IOT application Performance



**Synthetic transactions** identify problems networking monitoring can't see



# Selected Ecosystem Partner Integrations



**IT CHALLENGES**  
THE NEED TO DELIVER OUTCOMES



# NETWORKING CHALLENGES AT THE EDGE



**Technology Siloes  
Hinder Agility**



**Lack of Network  
Automation & Visibility**



**Security Threats  
Rising**



**Economic & Resource  
Headwinds**

**Networks Must Do More**



# IT OPERATOR IMPERATIVES





# ARUBA VISION

## Go Beyond Connect and Protect



Campus

The Key is Analyzing and Acting on Data



CONNECT

PROTECT

ANALYZE

ACT



Branch

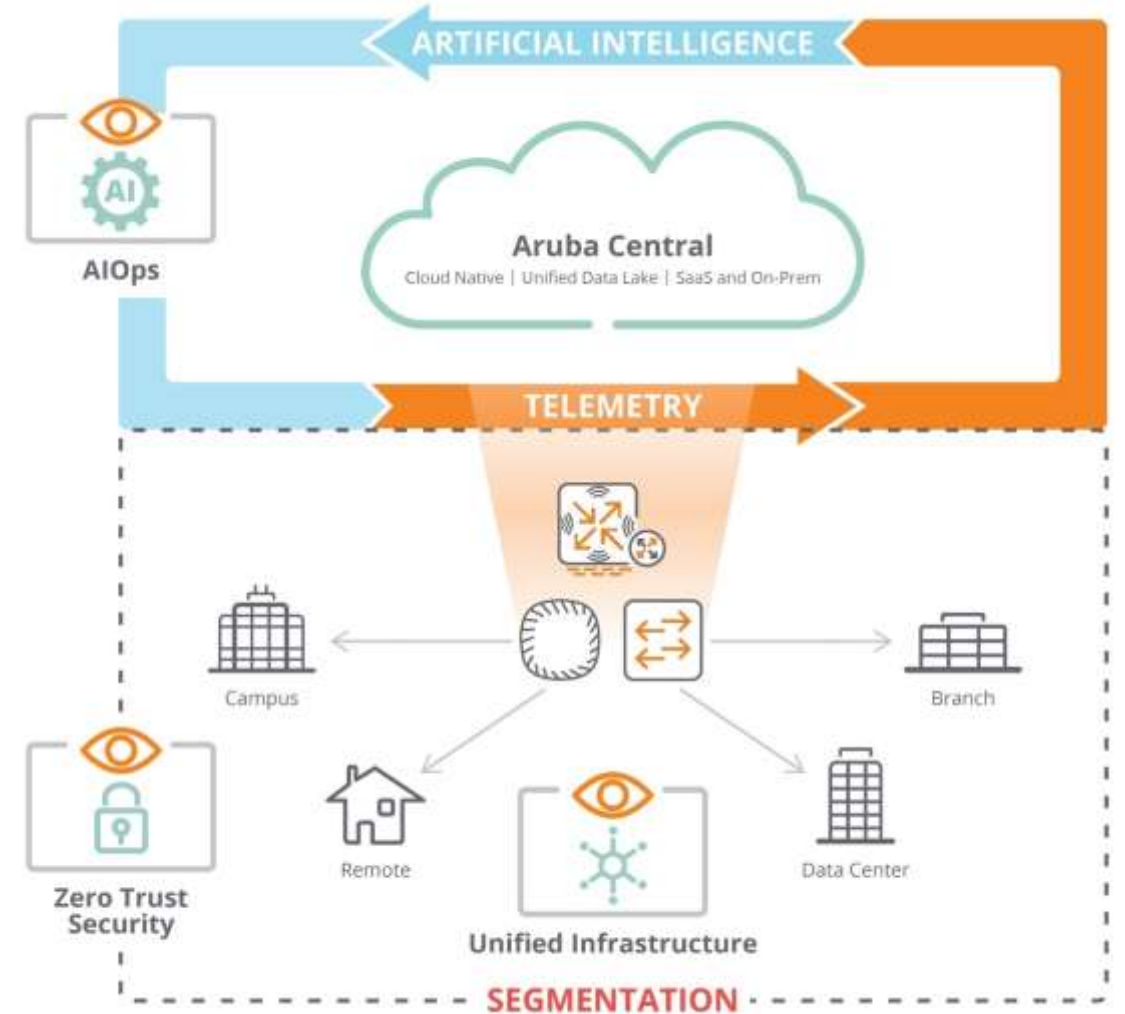


Data Center



# ARUBA ESP

## THE FOUNDATION FOR SMART MANUFACTURING



# ARUBA EDGE SERVICES PLATFORM (ESP)

The Foundation for the Smart Manufacturing

## AIOPS

AI Insights | User Insights



## UNIFIED INFRASTRUCTURE

Wi-Fi | Switching | SD-WAN | 5G | IOT



## ZERO TRUST SECURITY

Dynamic Segmentation | Device Insight



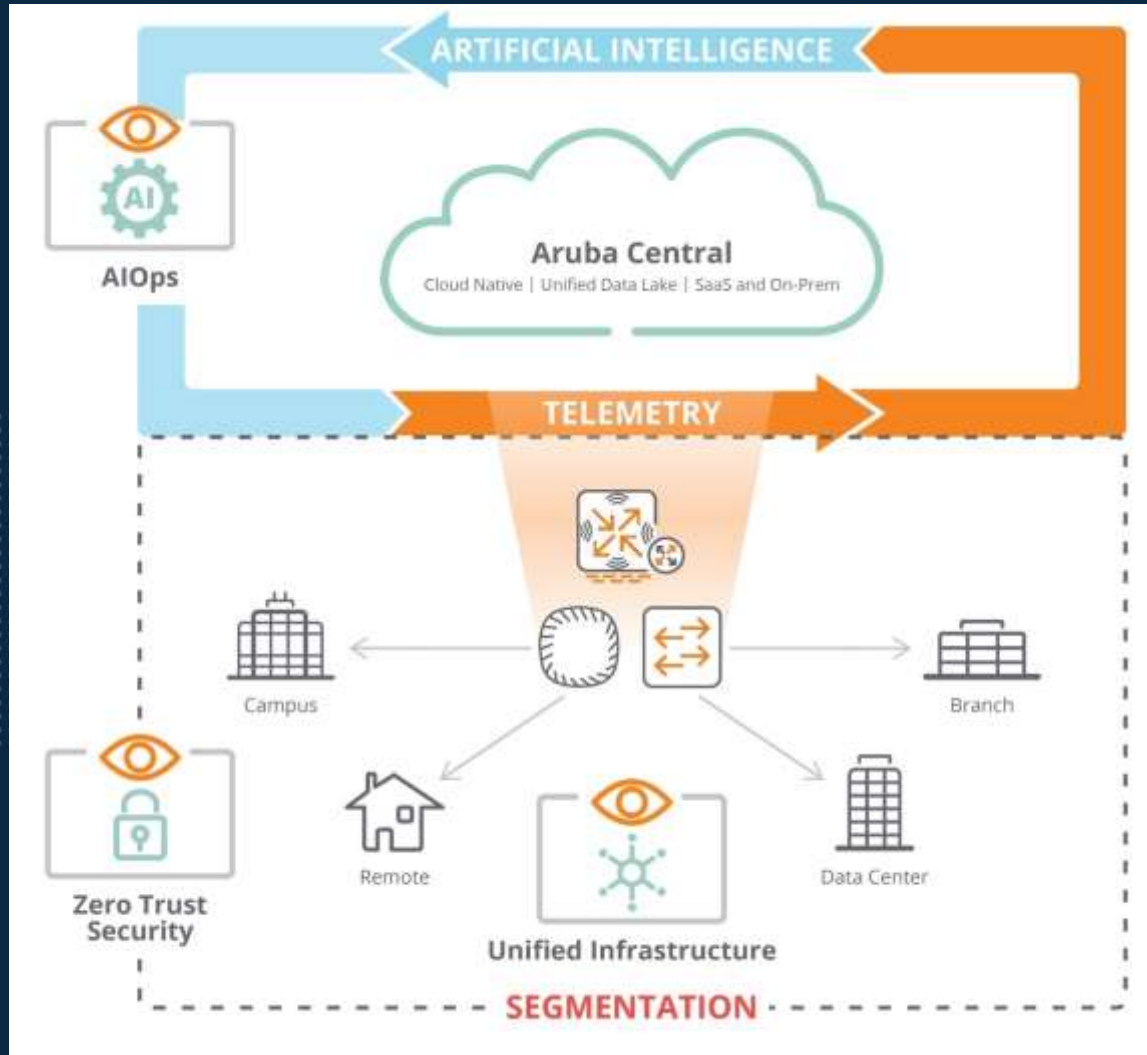
## Financial and Consumption Flexibility

HPEFS | Managed Connectivity Services



# ARUBA EDGE SERVICES PLATFORM (ESP)

The Foundation for the Smart Manufacturing



## Core Attributes

**AIOps**  
Automated IT Intelligence

**Zero Trust Security**  
Secure access from anywhere

**Unified Infrastructure**  
One portfolio for any use case



# ARUBA ESP FOR SMART MANUFACTURING



## Unified Infrastructure

Wi-Fi | Switching | SD-WAN | 5G | IOT

**Leverage the same infrastructure and management tools**

for corporate offices, plants, warehouses, and factories

**Network-in-a-box solutions**

with mobile installer app – allows non-technical staff to deploy

**Optimized for SD-WAN**

using MPLS, Internet and LTE cellular connectivity.



## Zero Trust Security

Dynamic Segmentation | Device Insight

**Provide secure guest Wi-Fi** with automated segmentation

**Protect Legacy Technologies** isolate Windows 7 systems

**Deploy new IoT devices** and automate policies

**Adapt to potential threats** on customers/employee devices



## AIOPS

AI Insights | User Insights

**Understand employee movements** by leveraging analytics

**Prioritize applications** like ERP or inventory systems

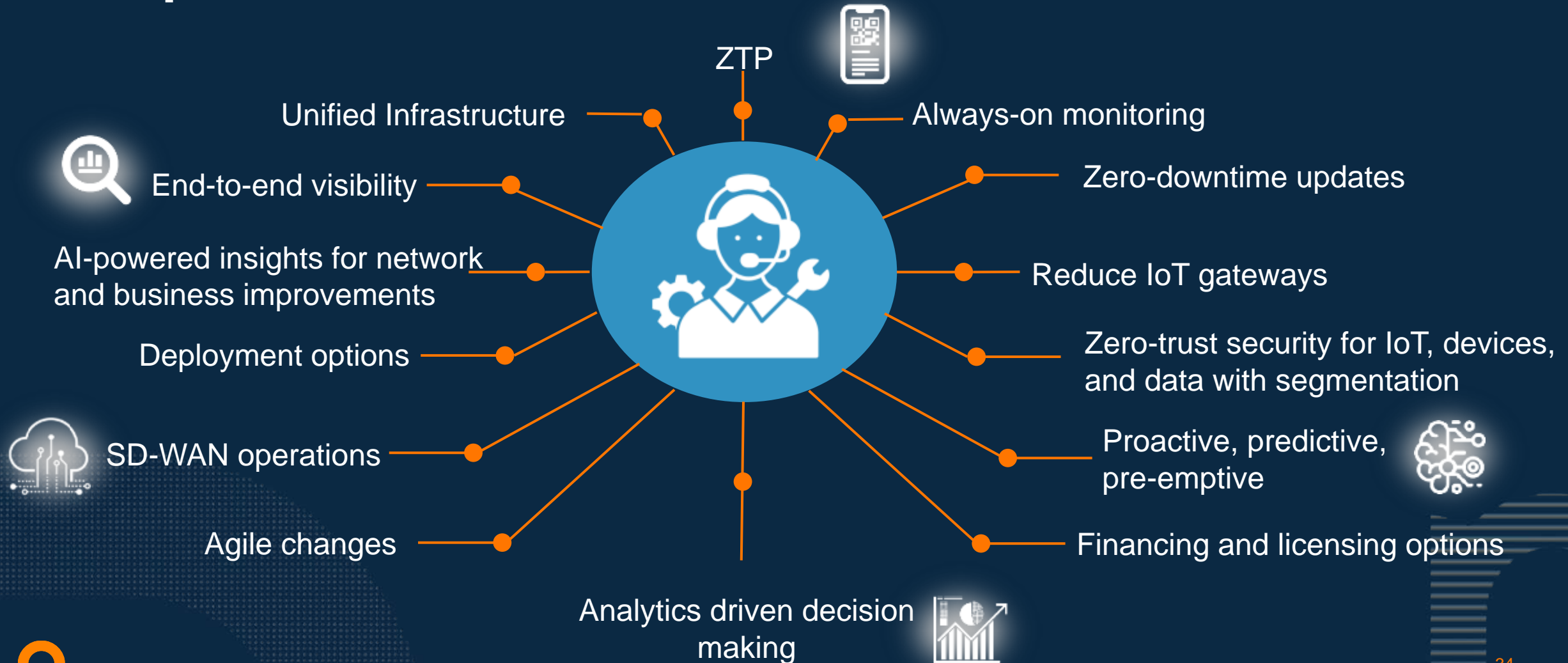
**Roam the plant** with high-performing Wi-Fi

**Stay ahead of issues** on factory lines ensuring no downtime



# THE NEW IT OPERATIONS MODEL

## Simple. Secure. Smart.



# HPE Infosys SGRE



# Q&A

